

Sullivan
Palatek

Dedicated to Quality....

....Committed to Support

Designed as light construction or soft rock drill with high speed and excellent flushing ability.

- Forged alloy construction
- Replaceable chuck, 7/8" x 4 1/4" or 7/8" x 3 1/4"
- Requires constant feed inline oiler
- Optional Wet Kit available
- One year Warranty
- Manufactured in USA



Specifications		
Net Weight	29 lbs	13 kg
Length	19.5 in	495 mm
Bore	2.4375 in	62 mm
Stroke	1.4375 in	37 mm
Blows per minute	2700	2700
RPM	240	240
Chuck Sizes	7/8 x 4 1/4 in	22 x 108 mm
	7/8 x 3 1/4 in	22 x 83 mm
Air Inlet (NPT)	3/4 in	19 mm
Air Consumption*	73 cfm	2.10 m ³ /m
Water Consumption	1.3 g / min	4.8 l / min
*estimated		

FOR OPTIMUM PERFORMANCE, DO NOT OPERATE TOOL ABOVE 90 PSI (6 BAR) WORKING PRESSURE.

WARNING:

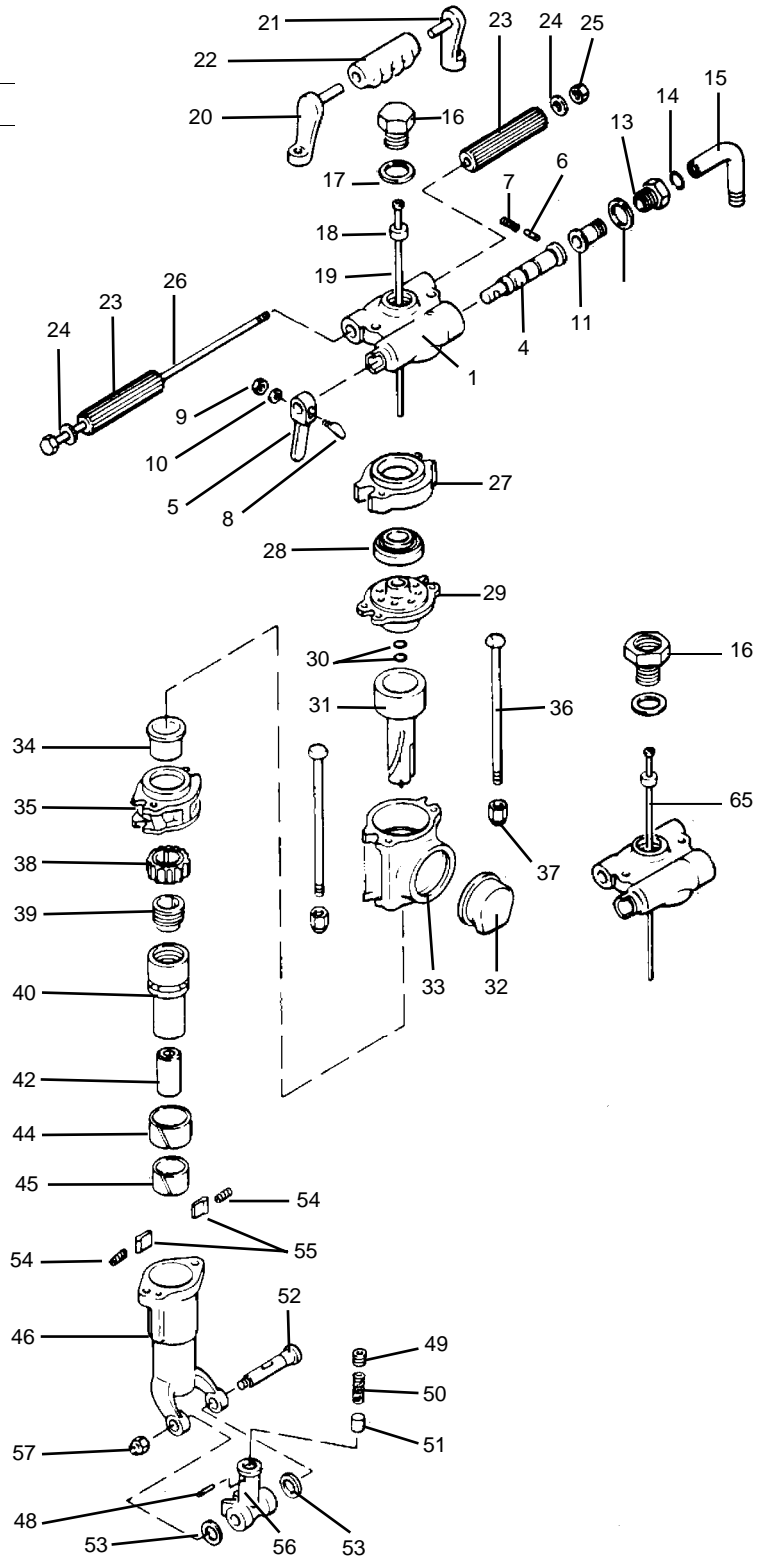
ALWAYS DISCONNECT THE AIR SUPPLY BEFORE CHANGING CHISELS OR DISMANTLING THE TOOL FOR SERVICE OR REPAIR. FOR MAXIMUM SAFETY WE ADVISE THE INSTALLATION OF A SHUT-OFF VALVE AT THE END OF THE AIR LINE.

DO NOT EXCEED 100 PSI (7BAR) WORKING PRESSURE.

PARTS LIST ROCK DRILL 30 lb. class SRD - 30

NOTE: This drill must be operated with a line oiler.

INDEX	PART	DESCRIPTION
1	SI6908	BACKHEAD - DRY
4	SI6909	THROTTLE VALVE
5	SI6910	THROTTLE VALVE HANDLE
6	SI6911	THROTTLE VALVE PLUNGER
7	SI6912	THROTTLE VALVE SPRING
8	SI6913	THROTTLE VALVE BOLT
9	SI6914	THROTTLE BOLT NUT
10	SI6915	THROTTLE BOLT LOCKWASHER
11	SI6916	SWIVEL CONNECTION
12	SI6919	AIR CONNECTION NUT WASHER
13	SI6918	AIR CONNECTION NUT
14	SI6920	AIR CONNECTION O-RING
15	SI6917	AIR CONNECTION ELBOW
16	SI6928	BLOW TUBE GLAND
17	SI6929	TUBE GLAND GASKET
18	SI6930	TUBE GASKET
19	SI6931	BLOW TUBE
20	SI6922	RIGHT GRIP SUPPORT
21	SI6921	LEFT GRIP SUPPORT
22	SI6923	CENTER GRIP
23	SI6924	HANDLE GRIP (2)
24	SI6927	HANDLE BOLT WASHER (2)
25	SI6926	HANDLE BOLT NUT
26	SI6925	HANDLE BOLT
27	SI6938	VALVE CHEST
28	SI6937	AUTOMATIC VALVE
29	SI6936	VALVE CHEST COVER
30	SI6939	VALVE CHEST COVER O-RING (2)
31	SI6944	PISTON
32	SI6935	EXHAUST DEFLECTOR
33	SI6932	CYLINDER
34	SI6934	FRONT WASHER BUSHING
35	SI6933	FRONT WASHER
36	SI6952	SIDE ROD (2)
37	SI6949	SIDE ROD NUT (2)
38	SI6940	RATCHET RING RIFLE NUT
39	SI6945	SLEEVE NUT
40	SI6946	ROTATION SLEEVE - 3 1/4" SHANK
40	SI6946A	ROTATION SLEEVE - 4 1/4" SHANK
42	SI6948	SLEEVE BUSHING 7/8" HEX x 3 1/4"
42	SI6948A	SLEEVE BUSHING 7/8" HEX x 4 1/4"
44	SI6964	FRONTHEAD LINER - LARGE
45	SI6963	FRONTHEAD LINER - SMALL
46	SI6953	FRONTHEAD - 3 1/4" SHANK
46	SI6953A	FRONTHEAD - 4 1/4" SHANK
48	SI6962	STEEL RETAINER PIN
49	SI6961	STEEL RETAINER SCREW
50	SI6960	STEEL RETAINER SPRING
51	SI6959	STEEL RETAINER PLUNGER
52	SI6957	STEEL RETAINER BOLT
53	SI6956	STEEL RETAINER PACKING(2)
54	SI6943	PAWL SPRING (2)
55	SI6942	ROTATION PAWL (2)
56	SI6955	STEEL RETAINER
57	SI6958	STEEL RETAINER NUT
16	SI6928W	WET CONSTRUCTION WATER TUBE GLAND
65	SI 6931W	WATER TUBE
NS	SI6966	WATER VALVE
NS	SI7334	UNIVERSAL WATER CONNECTION GROUP (INCLUDES 6966)



WHEN ORDERING TOOLS SPECIFY CHUCK SIZE

WHEN ORDERING REPLACEMENT PARTS, FURNISH THE MODEL NUMBER (S) AND SERIAL NUMBER(S) OF YOUR TOOLS.

**Sullivan
Palatek**